



MASSACHUSETTS
SENIOR CARE
ASSOCIATION



MASSACHUSETTS
SENIOR CARE
ASSOCIATION



Hebrew
SeniorLife

National Nursing Home COVID-19 Action Network

Orientation Session

October 29, 2020



MASSACHUSETTS
SENIOR CARE
ASSOCIATION



Hebrew
SeniorLife

Welcome

AHRQ ECHO National Nursing Home
COVID-19 Action Network



Agency for Healthcare
Research and Quality



NYU SCHOOL
OF MEDICINE



Institute for
Healthcare
Improvement



MASSACHUSETTS
SENIOR CARE
ASSOCIATION

Program Goals



AHRQ ECHO National Nursing
Home COVID-19 Action Network



- Prevent SARS-COV-2 from entering nursing homes where it has not been detected.
- Identify residents and staff who have been infected with SARS-COV-2.
- Prevent the spread of SARS-COV-2 between staff, residents, and visitors.
- Provide safe and appropriate care to residents with mild and asymptomatic cases of COVID-19.
- Ensure staff members have the knowledge, skills, and confidence to implement best-practice safety measures to protect residents and themselves.
- Reduce social isolation for residents, families, and staff during these difficult times.



MASSACHUSETTS
SENIOR CARE
ASSOCIATION

Introductions



MASSACHUSETTS
SENIOR CARE
ASSOCIATION



Hebrew
SeniorLife

Tara Gregorio

President, Massachusetts Senior Care Association

Lewis A. Lipsitz, MD

Professor of Medicine, Harvard Medical School

Chief Academic Officer and Director, Marcus Institute for Aging Research,
Hebrew SeniorLife

Chief, Division of Gerontology, Beth Israel Deaconess Medical Center

Helen Magliozzi

Director of Regulatory Affairs, Massachusetts Senior Care Association



MASSACHUSETTS
SENIOR CARE
ASSOCIATION



Hebrew
SeniorLife

teleECHO Sessions

ECHO Model



ECHO is all teach, all learn



Interactive



Co-management
of cases



Peer-to-peer
learning



Collaborative
problem solving



MASSACHUSETTS
SENIOR CARE
ASSOCIATION

teleECHO Sessions



- Weekly 90 min sessions
 - 60 minutes didactic and case discussion;
 - 30 minutes Q&A optional
- Coordinators will request brief, anonymous descriptions of challenging cases 2-3 days before each session.
- Content experts will be invited
- Discussion will solicit input from all attendees.
- Attendance data will be collected.



MASSACHUSETTS
SENIOR CARE
ASSOCIATION

Hebrew
SeniorLife

Program Participation: What to Expect



MASSACHUSETTS
SENIOR CARE
ASSOCIATION

Nursing Facility Participation



Hebrew
SeniorLife

- Nursing home must participate in 13 of 16 weeks teleECHO sessions to qualify for stipend
- Minimum of 2 staff attend weekly teleECHO session – ideally one would be a CNA and a clinical lead
- Nursing homes must complete Nursing Home Compensation Packet within 4 weeks of the program launch to receive \$6,000 stipend for participation
- No data entry or reporting required for nursing home participants



MASSACHUSETTS
SENIOR CARE
ASSOCIATION

Cohort Placement



- **Currently have 9 cohorts of 33 nursing homes in each cohort**
- **Nursing homes were placed in cohorts using the following:**
 - Nursing home request to participate with a specific hospital system (if hospital system participating)
 - Specific hospital system or participating organizations' request
 - Regionally



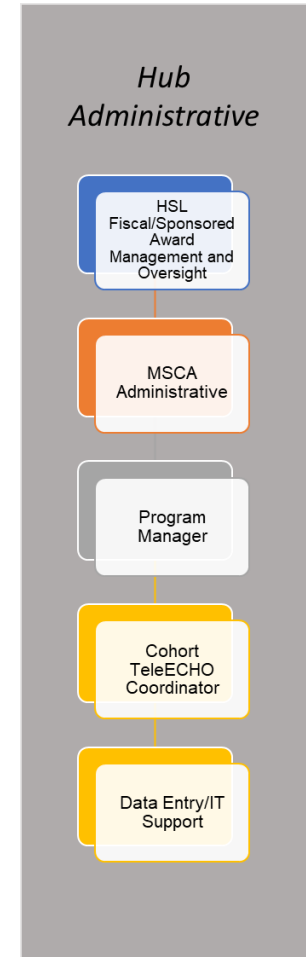
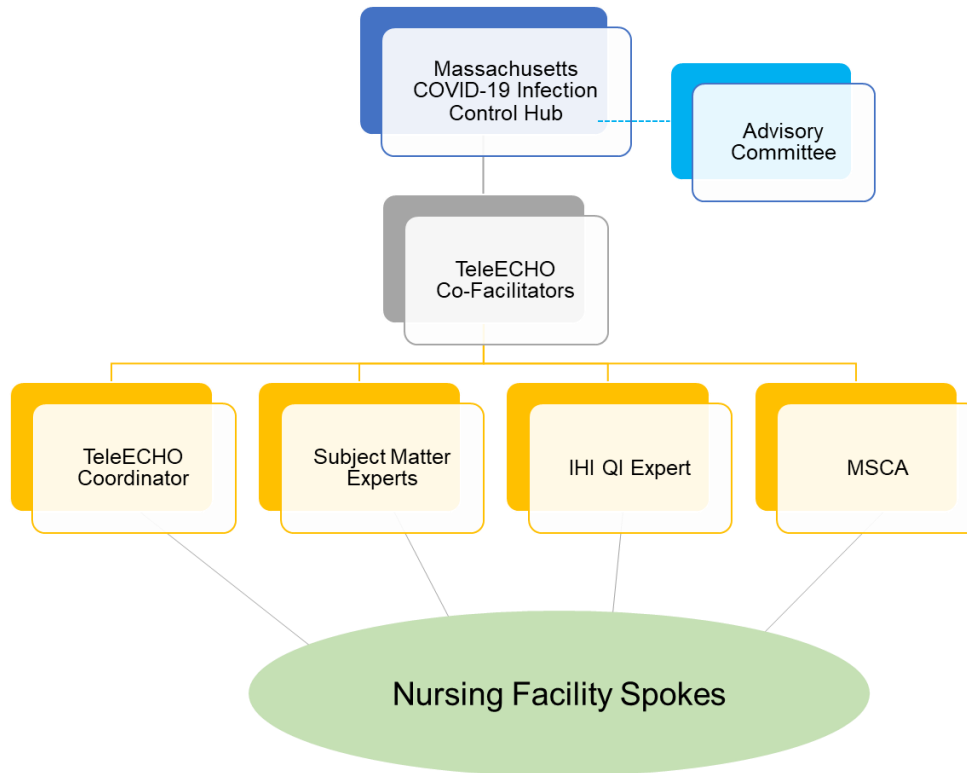
MASSACHUSETTS
SENIOR CARE
ASSOCIATION

Organizational Structure



Organizational Structure

Property of Massachusetts Senior Care Association. Do not share.





MASSACHUSETTS
SENIOR CARE
ASSOCIATION

Cohort Teams



COHORT 4

Weekly Sessions

Day: Wednesdays

Time: 2:00 p.m. – 3:30 p.m.

Cohort Team

TeleECHO Co-Facilitator – Larissa Lucas, MD, North Shore Physicians Group

TeleECHO Co-Facilitator – Operator: Beth Scheffler, Chelsea Soldiers' Home

TeleECHO Program Coordinator: Melissa Lecesse

TeleECHO Program Manager: Melissa Lecesse

MSCA Staff Representative: Jennifer Chen

Subject Matter Experts: TBD

IT Support: Denise DeSimone



MASSACHUSETTS
SENIOR CARE
ASSOCIATION

Cohort Schedules



Cohort	Cohort Schedule	Co-Facilitator (Clinical)	Co-Facilitator (Operator)
Cohort 1	Mondays at 1:00pm-2:30pm	Rebecca Starr, MD, Cooley-Dickinson Hospital	Karen Petruccelli, Legacy Lifecare
Cohort 2	Tuesdays at 11:00am-12:30pm	Serena Chao, MD, Cambridge Health Alliance	Dennis Dineen, Landmark Management Solutions
Cohort 3	Tuesdays at 12:00pm-1:30pm	Sandra Shi, MD, Hebrew SeniorLife	Laurie Herndon, Hebrew SeniorLife
Cohort 4	Wednesdays at 2:00-3:30pm	Larissa Lucas, MD, North Shore Physicians Group	Beth Scheffler, Chelsea Soldiers' Home
Cohort 5	Thursdays at 12:00pm-1:30pm	Sarah McGee, MD, UMass Memorial	Matt Salmon, SALMON Health and Retirement
Cohort 6	Thursdays at 1:00pm-2:30pm	Chuck Pu, MD/Amy Baughman, MD, MGB	Eric Sheehan, Chelsea Soldiers' Home
Cohort 7	Fridays at 9:30am-11:00am	Eric Weber, MD, Cape Cod Hospital	Bill Bogdanovich, Broad Reach Health Care
Cohort 8	Fridays at 11:00am-12:30pm	Roger Schutt, MD, BIDMC Dr. Virginia Cummings; Dr. Christine Pierre	Stephanie Ifezue, Hebrew SeniorLife
Cohort 9	Tuesdays at 1:00pm-2:30pm	Asif Merchant, MD, Christine Medros, Bethany Vrouhas, Krista Shaw, New England Community Medical Services	Bill Graves, South Cove Manor at Quincy Point

Technology



- **Nursing homes must have the following technology to participate in the weekly teleECHO sessions:**
 - Laptop, Computer, Tablet or Cell Phone with a camera and microphone
 - Good Wi-Fi access
- **Participants will be required to be on screen during the sessions**
- **Indicate if you need technology help by completing survey at the end of the webinar**
- **Zoom orientation next week!**





MASSACHUSETTS
SENIOR CARE
ASSOCIATION

Rapid Response Framework



Program involves development of a rapid response framework

Goal : provide urgent, immediate technical assistance, resources, and guidance to nursing homes that experience outbreaks and other emergencies

- Mass Senior Care will serve as the conduit for participating nursing homes for questions and assistance between ECHO sessions
- Provide support as needed related to PPE, testing, workforce, infection control and regulations.
- Mass Senior Care will involve the necessary clinical co-facilitators and/or subject matter experts to provide additional guidance to participating nursing homes as needed.





MASSACHUSETTS
SENIOR CARE
ASSOCIATION

Office Hours Phase



Phase 2

- Weekly office hours for remaining 36 weeks
- Optional for nursing homes to participate
- Will be held 3 times a week
- Stay tuned!





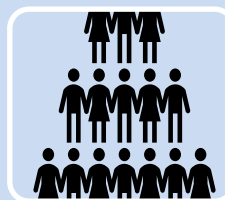
MASSACHUSETTS
SENIOR CARE
ASSOCIATION

Next Steps



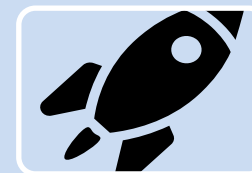
October 29th

*Orientation
Session*



Week of
November 2nd

*Cohort
Introductory
Session and
Zoom Tutorial*



Week of
November 9th

*Launch Week:
First teleECHO
Session*



MASSACHUSETTS
SENIOR CARE
ASSOCIATION

Hebrew
SeniorLife



Other Questions? Contact Mass Senior Care

Helen Magliozzi HMagliozzi@maseniorcare.org

Jennifer Chen JChen@maseniorcare.org