

## Evacuation efforts

To help patients flee Thursday's blaze at the Nashville HealthCare Center, firefighters carried victims in wheelchairs and on gurneys down narrow stairwells or through windows onto ladder ramps. An elevator in the building was not working once the fire broke out. Here's a look at how more than 100 patients were evacuated:

Nashville

Patterson St.

Fire broke out in the northeastern-most room on the second floor. Investigators have sent an electric bed from that room to the U.S. Consumer Product Safety Commission for examination.

Firefighters safely evacuated most of the patients — and nearly all of the fourth floor — through the west stairwell. A triage station was set up outside as well.

A firetruck ladder was extended to a third-floor window to help others escape rising smoke. It's unclear if victims from other floors used this escape route.

This was the nearest stairwell and exit for those on the east side of the building, but the exit was also nearest to the blaze.

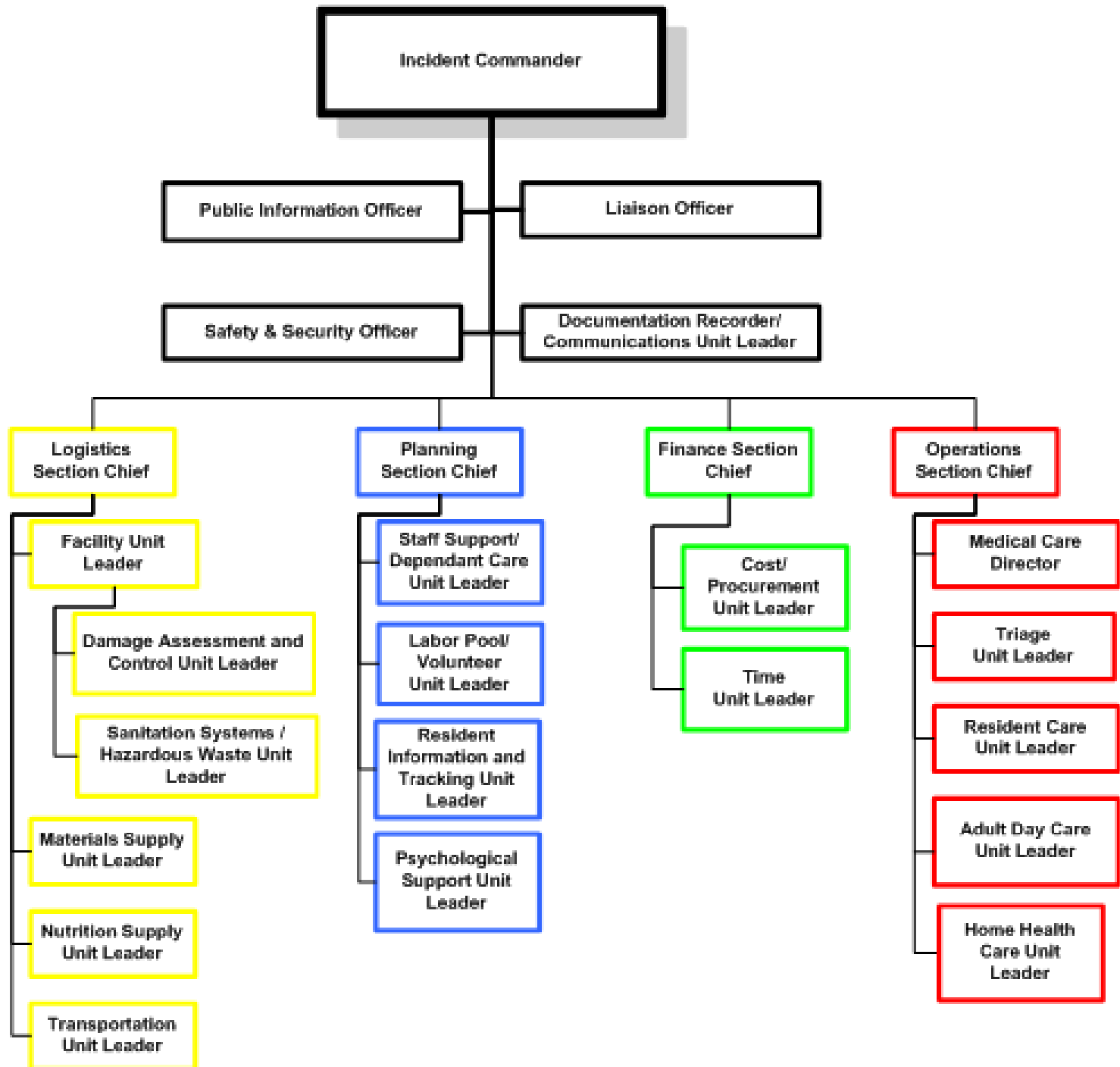
Alley

Fourth floor  
Third floor  
Second floor  
First floor

Parking lot

**Note:** Building schematic was put together with a variety of information and source material and may not be drawn to scale. Interior hallways, rooms and stairwells are approximate representations.

| <b>Key facts</b>                    | <b>Hartford</b>   | <b>Nashville</b>   |
|-------------------------------------|---|--|
| Date and time of fire               | February 26, 2003; alarm received by fire department at 2:38 a.m.                         | September 25, 2003; alarm received by fire department at 10:18 p.m.  |
| Date of last fire safety inspection | January 29, 2003  | May 27, 2003   |
| Number of residents                 | 148   | 118  |
| Fire department response            | 6 minutes after notification  | 9 minutes after notification   |
| Origin of fire                      | Resident's room   | Resident's room  |
| Nursing home staff on duty          | 12  | 12   |
| Construction type                   | Noncombustible with 1-hour fire-rated exterior walls and structural frame. Unsprinklered. | Noncombustible with 2-hour fire-rated exterior walls and structural frame. Unsprinklered.                                    |
| Year(s) of construction             | 1970 and 1974   | 1967   |
| Number of floors in facility        | 1   | 4  |
| Number of deaths                    | 16, primarily in vicinity of room where fire broke out.                                   | 15; 10 residents died on 2nd floor where fire originated. Five residents died on 3 <sup>rd</sup> and 4 <sup>th</sup> floors. |
| Cause of fire                       | Arson by cognitively impaired resident with a history of self-inflicted                   | Undetermined.  |



# POSITIONS AND GOALS

